

# Venue Accessibility Guide

FOR THE LONDON MATHEMATICAL SOCIETY  
DE MORGAN HOUSE



## Contact

Contact for Accessibility Enquiries: Andrew Dorward

✉ [andrew.dorward@lms.ac.uk](mailto:andrew.dorward@lms.ac.uk) or [roombookings@demorganhouse.co.uk](mailto:roombookings@demorganhouse.co.uk)

☎ 020 7927 0806

🌐 <https://www.lms.ac.uk/> or / <https://www.demorganhouse.org.uk/>

## At a Glance



Step only Access

- The building currently has stepped access only to the raised ground floor and lower ground floor entrances.



Accessible Toilets

- An accessible toilet is located at lower ground floor level.



Hearing

- A hearing loop is fitted in the Hardy and Cayley Rooms, all other meeting rooms do not have this facility.
- The audible fire alarm is fitted with flashing beacons to toilets only.



Visual

- There are no specific features for visually impaired users.

## Getting Here

### Site Address

London Mathematical Society

De Morgan House

57-58 Russell Square

London

WC1B 4HS

## **Public Transport**

- The nearest tube station is Russell Square, located within 300m of the building.
- The nearest accessible tube station is Kings Cross St Pancras.
- The nearest bus stop is in Russell Square, located within 100m of the building.

## **Taxi**

- You can get a taxi to the building using:
- London Black Taxi: +44 (0)20 3984 4515  
Book A London Cab: +44 (0)20 3105 4406
- A wheelchair accessible service is available.

## **Parking**

- On street parking is available in Russell Square.
- There are no accessible parking bays within 100m of the building.

## **Arrival**

### **Approach Route**

- The pavement through Russell Square on the approach to the building is set to an acceptable gradient and has a firm and level surface.
- The pavement achieves a clear width of more than 2m.

### **External Steps**

- There are 5 steps up to the raised ground floor entrance and 11 steps down from street level to the lower ground floor entrance.
- The external steps to the entrances have no contrasting nosings.
- The external steps have no tactile paving and no handrails.
- The stepped entrances do not have a lift or platform stair-lift.



### Entrances

- The raised ground floor main entrance doors achieve a clear width of 680mm through a single leaf and 1360mm through both doors.
- The lower ground floor entrance door achieves a clear width of 900mm.
- Entrance doors are not power assisted and require approx. 70 newtons force to open.
- An intercom is available. LMS guests should dial 'LMS' on the company directory, and conference guests should dial 'Meetings/Events' on the company directory, to gain access.



### Reception/Information Desk

- The building has a small reception counter in the raised ground floor entrance.
- The reception counter does not have a hearing loop.
- Staff are trained to meet and greet all visitors on arrival.

## Getting Around Inside

### Horizontal Circulation and Doors

- All visitor meeting rooms and break-out facilities are located at lower ground floor level.
- The raised ground floor entrance lobby and corridors achieves a width of 2400mm narrowing to 1000mm at the main stair to the lift and lower ground floor.
- The main lower ground floor corridor achieves a width of 1800mm.
- The lower ground floor corridor narrows to as little as 970mm and turns through 90 degrees along the route to the accessible toilet.
- Internal corridor doors achieve a width of between 750mm and 830mm.



### Lifts

- A lift serving all floors is located at the rear of the building.
- Except at lower ground floor level, access to the lift is stepped at each floor level.
- A clear space of 1000mm is available in front of the lift.
- The lift doors achieve a clear width of 700mm.
- The lift car achieves clear dimensions of 850mm deep by 1250mm wide.
- Control buttons have embossed text and braille markings.
- Audio announcement of floor level and door opening is in place.



- A vertical platform lift is located at the rear to access the Hardy meeting room and the garden with outside seating.
- The vertical platform lift doors achieve a clear width of 850mm.
- The platform achieves clear dimensions of 1400mm deep by 760mm wide.
- Control buttons have embossed text and braille markings.



### Stairs

- The main stairs are located next to the main entrance at raised ground floor level.
- A flight of 3 steps is located across the raised ground floor corridor on route to the lift.
- Stairs are not fitted with contrasting nosings.
- Stairs have handrails to one side only.



## Toilets and Changing Facilities

### Accessible Toilets

- The visitor accessible toilet cubicle is located at lower ground floor level.
- The cubicle door achieves a clear width of 850mm.
- The cubicle achieves overall dimensions of 2100mm deep by 1800mm wide.
- The cubicle is designed for left hand transfer.
- Grab-rails are provided to the WC and basin positions.
- The cubicle is fitted with a pull cord alarm.
- The WC and basin are fitted with lever flush and mixer tap.



### Standard Toilets

- Standard male, female and gender neutral visitor toilets are located at raised and lower ground floor levels.
- Basins are fitted with lever type taps. WCs are fitted with a push button flush.





## Meeting Rooms

### Hardy Meeting Room

- The Hardy meeting room is the largest available room.
- The meeting room door achieves a clear width of 860mm.
- The meeting room achieves overall dimensions of 6.5m deep by 10.7m wide.
- A manoeuvring space of at least 1500mm by 1500mm is available at the side of the tables which are portable and can be moved by staff if required.
- The tables have knee space of approx. 700mm above floor level.
- The chairs are fitted with back and arm rests.
- The meeting room is fitted with a hearing loop.



### Burnside Meeting Room

- The meeting room door achieves a clear width of 860mm. The bi-folding doors can be opened-up to the main corridor.
- The meeting room achieves overall dimensions of 4.0m deep by 6.0m wide.
- A manoeuvring space of at least 1500mm by 1500mm is available at the side of the tables which are portable and can be moved by staff if required.
- The tables have knee space of approx. 700mm above floor level.
- The chairs are fitted with back and arm rests.
- The meeting room is not fitting with a hearing loop.



### Sylvester Meeting Room

- The meeting room door achieves a clear width of 860mm. The bi-folding doors can be opened-up to the main corridor.
- The meeting room achieves overall dimensions of 4.0m deep by 5.2m wide.
- A manoeuvring space of at least 1500mm by 1500mm is available at the side of the tables which are portable and can be moved by staff if required.
- The tables have knee space of approx. 700mm above floor level.
- The chairs are fitted with back and arm rests.
- The meeting room is not fitting with a hearing loop.



### **Cayley Meeting Room**

- The meeting room door from the main corridor achieves a clear width of 850mm.
- The meeting room door from the stair lobby achieves a clear width of 770mm.
- The meeting room achieves overall dimensions of 6.0m deep by 5.7m wide.
- A manoeuvring space of at least 1500mm by 1500mm can be made available at the side of the tables which are portable and can be moved by staff if required.
- The tables have knee space of approx. 700mm above floor level.
- The chairs are fitted with back and arm rests.
- The meeting room is fitting with a hearing loop.



### **Break-out Area**

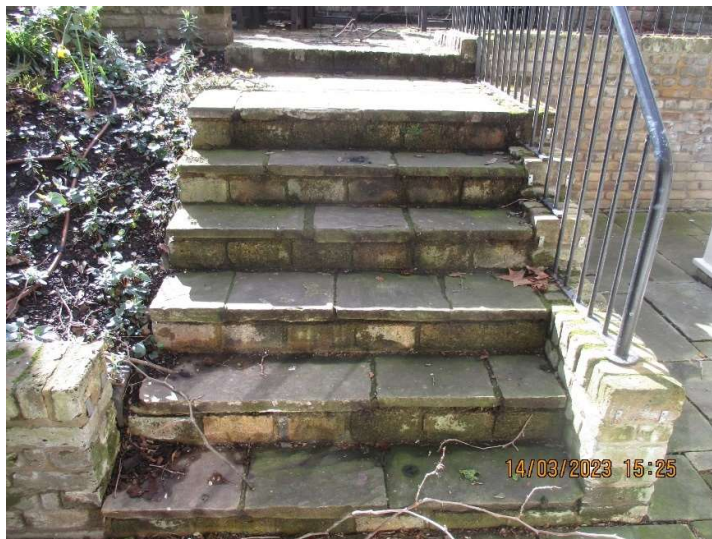
- The corridor route from the main stair and lift achieves a width of 970mm.
- The area achieves overall dimensions of 6.7m deep by 6.0m wide.
- A manoeuvring space of at least 1500mm by 1500mm is available at the side of some of the tables which are portable and can be moved by staff if required.
- The tables have clear knee space beneath of less than 700mm high.
- The chairs are fitted with back rests only.
- The servery counter does not have a low-level position with knee space.
- Staff are trained to serve refreshments and to provide assistance to visitors.



## Getting Around Outside

### Rear Courtyard Garden

- A small garden with outside seating is available to the rear at lower ground floor level. The garden can be accessed using the platform lift or steps.
- The external steps to the outside seating have no contrasting nosings and a single handrail.



## **Customer Care & Support**

### **Equipment**

- Audio visual equipment is available in the meeting space for presentations.

### **Booking Procedures**

- Staff are trained to ascertain the needs of meeting attendees prior to arrival.
- Meeting rooms are set up to ensure adequate manoeuvring space for individual attendees.

### **Evacuation**

- The fire alarm has beacons fitted to toilet areas only.
- There is no disabled refuge system to the raised or lower ground floor.
- There are no evacuation chairs or assisted evacuation plan in place.